

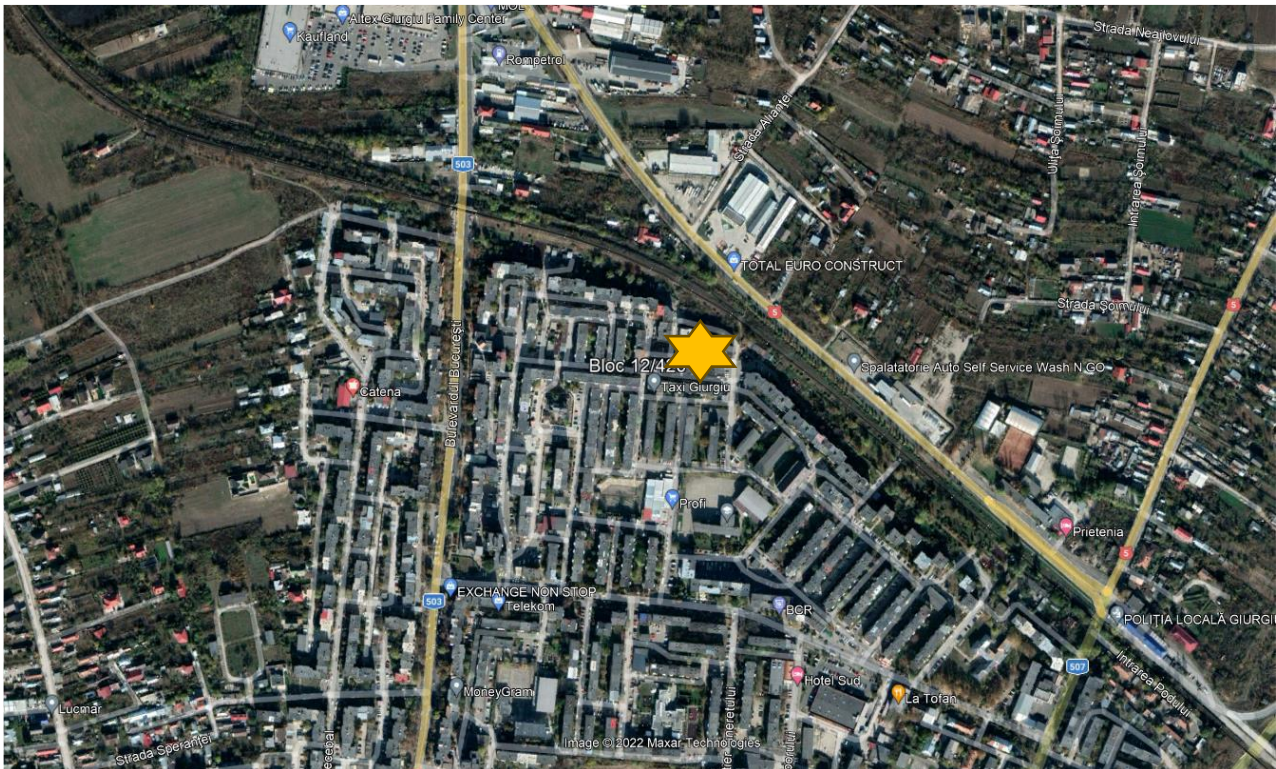
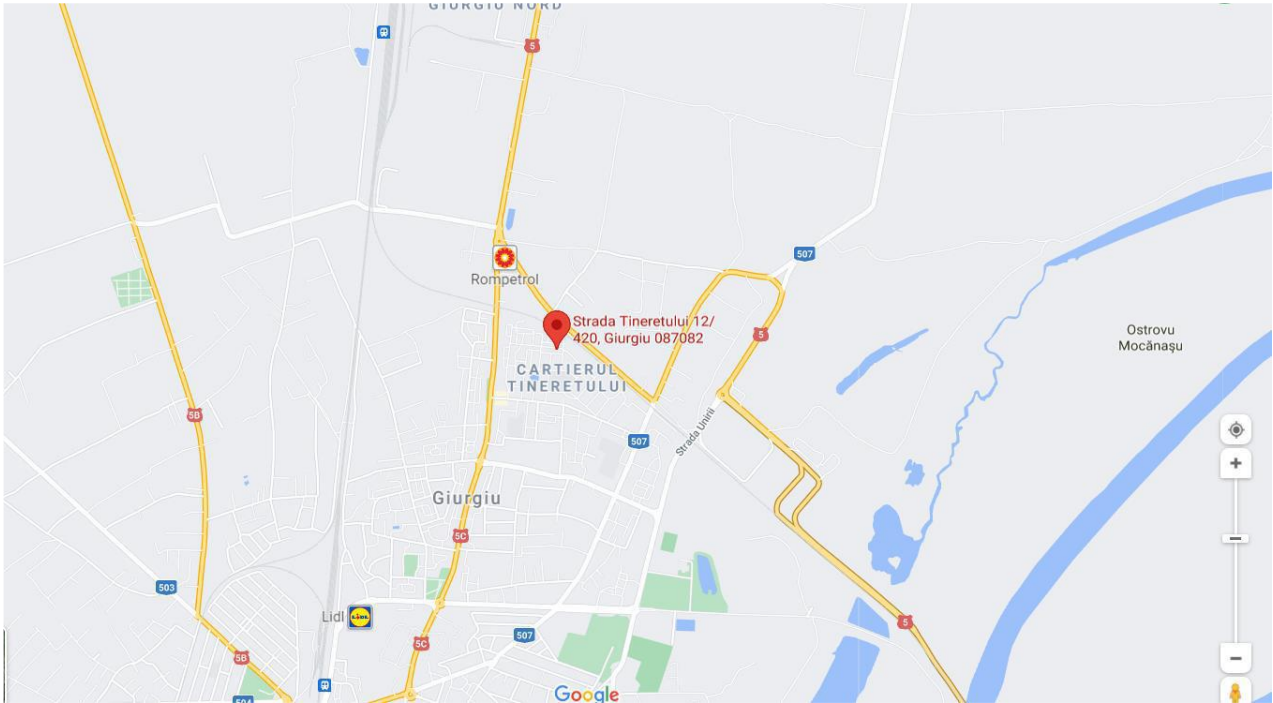
DETALII ANUNT

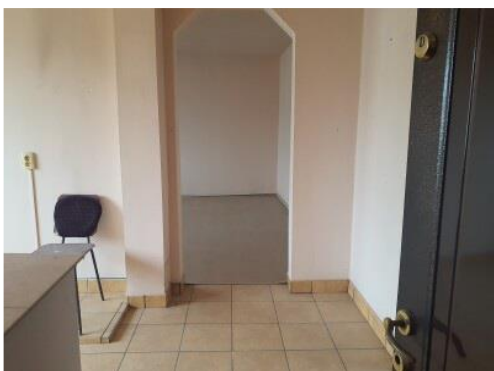
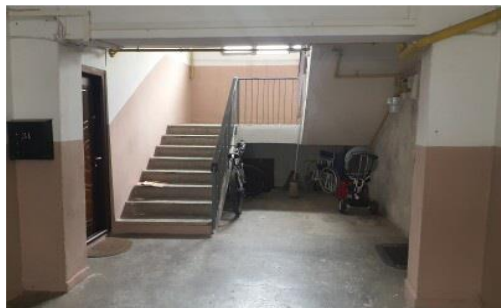
Proprietar:	EXIM BANCA ROMANEASCA SA
Adresa:	GIURGIU, STR TINERETULUI, BL 12/420, SC C, ET 4, AP 43, JUD GIURGIU
Oras:	GIURGIU
Judet:	GIURGIU
Tip imobil:	APARTAMENT
Compartimentare:	CAMERA ZI (18,87), DORMITOR (11,87), DORMITOR (8,50), BAIE (3,74), BUCATARIE (7,70), HOL (4,71), HOL (2,77), HOL (3,96), DEBARA (0,63), DEBARA (0,42), BALCON (2,61)
Suprafata utila:	63,12 MP
An constructie:	≈ 1980
Nivel:	4 (S+P+4E)
Numar camere:	3
Pret promovare:	43.450 EURO
Plata:	IN RON LA CURSUL BNR DIN ZIUA VANZARII
Modalitate de achizitie:	PRIN VANZARE DIRECTA, PE BAZA DE OFERTA; NU ESTE PURTATOR DE TVA

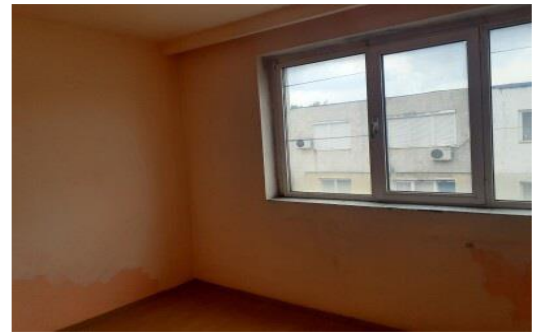
CONTACT

E-mail	administrare.dip@eximbank.ro
Telefon	021 304 80 42

POZE / HARTA







RELEVEU IMOBIL

PROPRIETAR: BOȘMAN ION
STR. TINERETULUI BL. 12/420 SC. C AP. 43
MUN. GIURGIU

Accesul este anexă
la Aut.

Nr. INC.	DENUMIRE INCAPERE	SUPR. UTILA
1	Camera de zi	18,87
2	Baie	3,74
3	Dormitory	11,87
4	Dormitory	8,50
5	Hol	4,71
6	Hol	2,77
7	Hol	3,96
8	Bucatarie	7,70
9	Debara	0,63
10	Dabara	0,42
11	Balcon	2,61
TOTAL		65,78

Conform cu originalul

13.06.2008

