

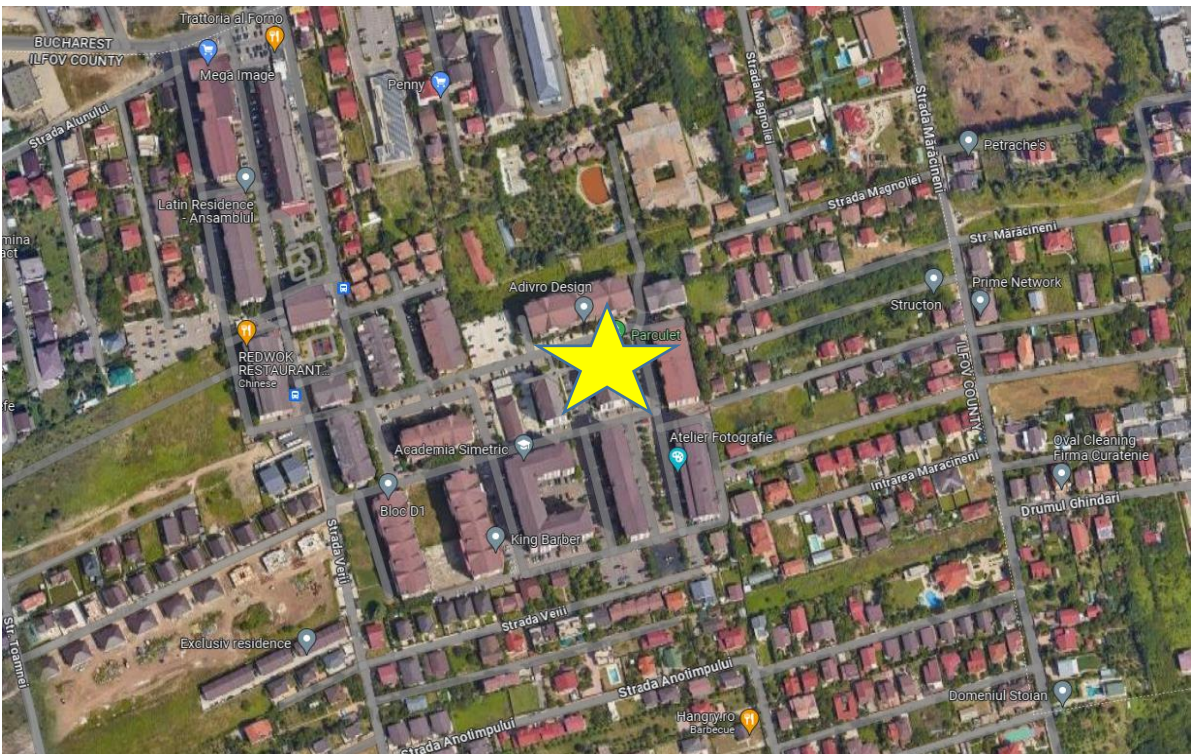
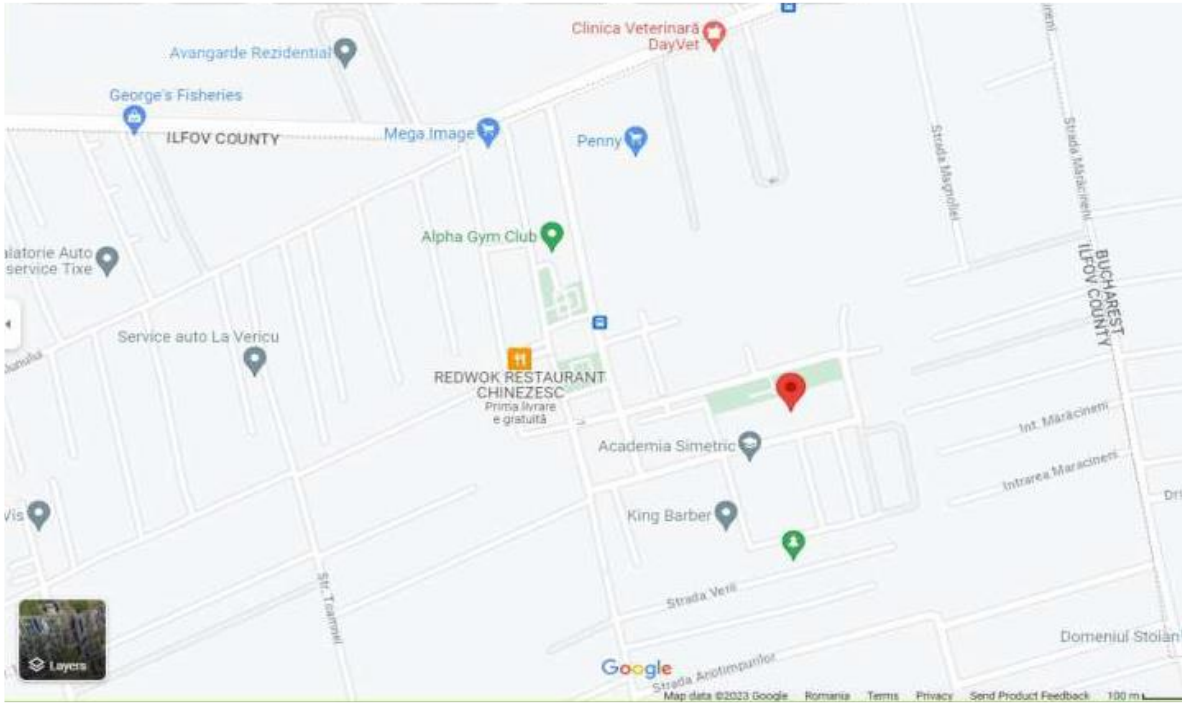
DETALII ANUNT

Proprietar:	EXIM BANCA ROMANEASCA SA
Adresa:	BRAGADIRU, STR PRELUNGIREA GHENCEA, NR 45, BL C2, SC A, ET 3, AP 22, JUD ILFOV
Oras:	BRAGADIRU
Judet:	ILFOV
Tip imobil:	GARSONIERA
Suprafata utila totala:	53,07 MP
An constructie:	≈ 2008
Nivel:	3 (P+5E+M)
Numar camere:	1
Pret promovare:	58.300 EURO
Plata:	IN RON LA CURSUL BNR DIN ZIUA VANZARII
Modalitate de achizitie:	PRIN VANZARE DIRECTA, PE BAZA DE OFERTA; NU ESTE PURTATOR DE TVA

CONTACT

E-mail	administrare.dip@eximbank.ro
Telefon	0377 906 720

POZE / HARTA



PERSPECTIVA IMOBIL



INTRARE IMOBIL



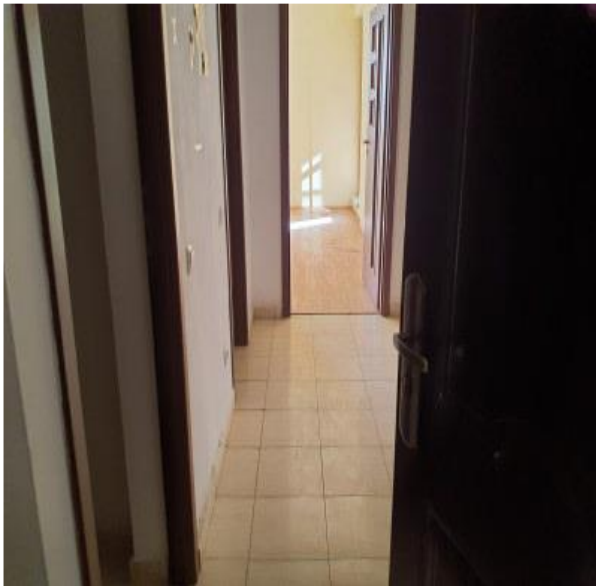
CASA SCARII



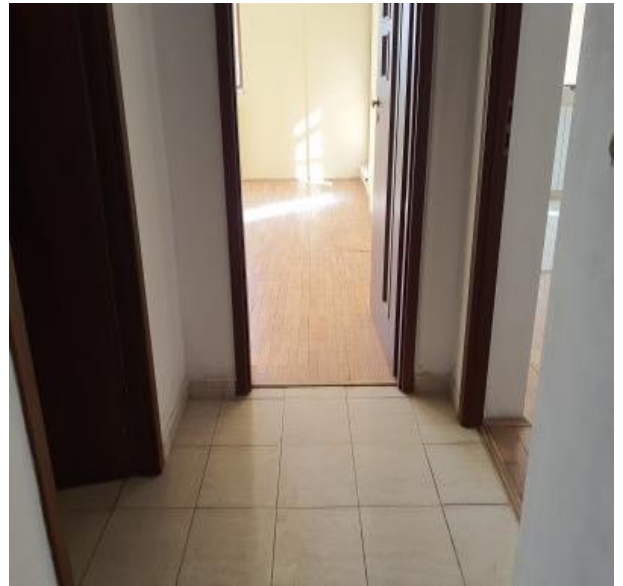
LIFT



ACCES IN APARTAMENT



HOL



DEBARA



BAIE



CAMERA



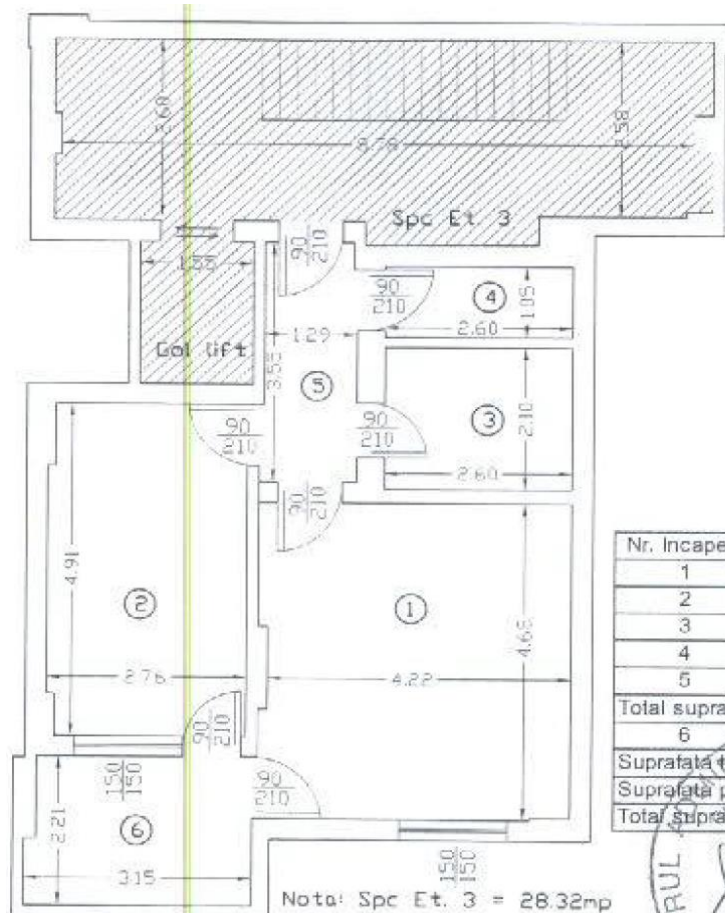
BUCATARIE



BALCON



RELEVU LOCUINTA
Scara 1:100



Nr. Incapere	Denumire incapere	S (mp)
1	Camera	20.19
2	Bucatarie	13.38
3	Baie	5.46
4	Debara	2.73
5	Hol	4.56
Total suprafata utila		46.32
6	Balcon	6.75
Suprafata totala		53.07
Suprafata pereti		10.33
Total suprafata construita		63.40

RUL
STANCU
ATALIN